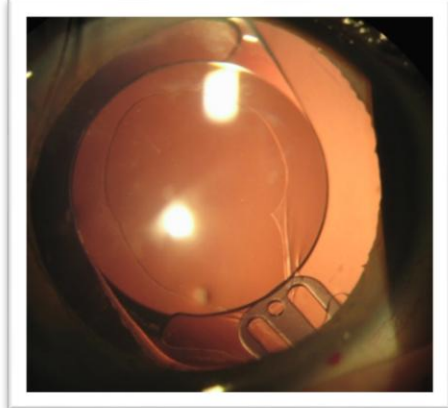
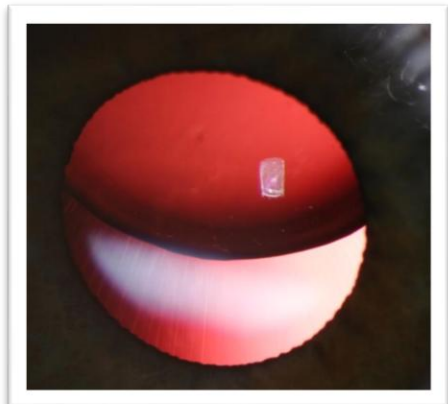


The capsular Anchor in complicated cases



Ehud I. Assia, MD
Adi Michaeli, MD
Yokrat Ton, MD



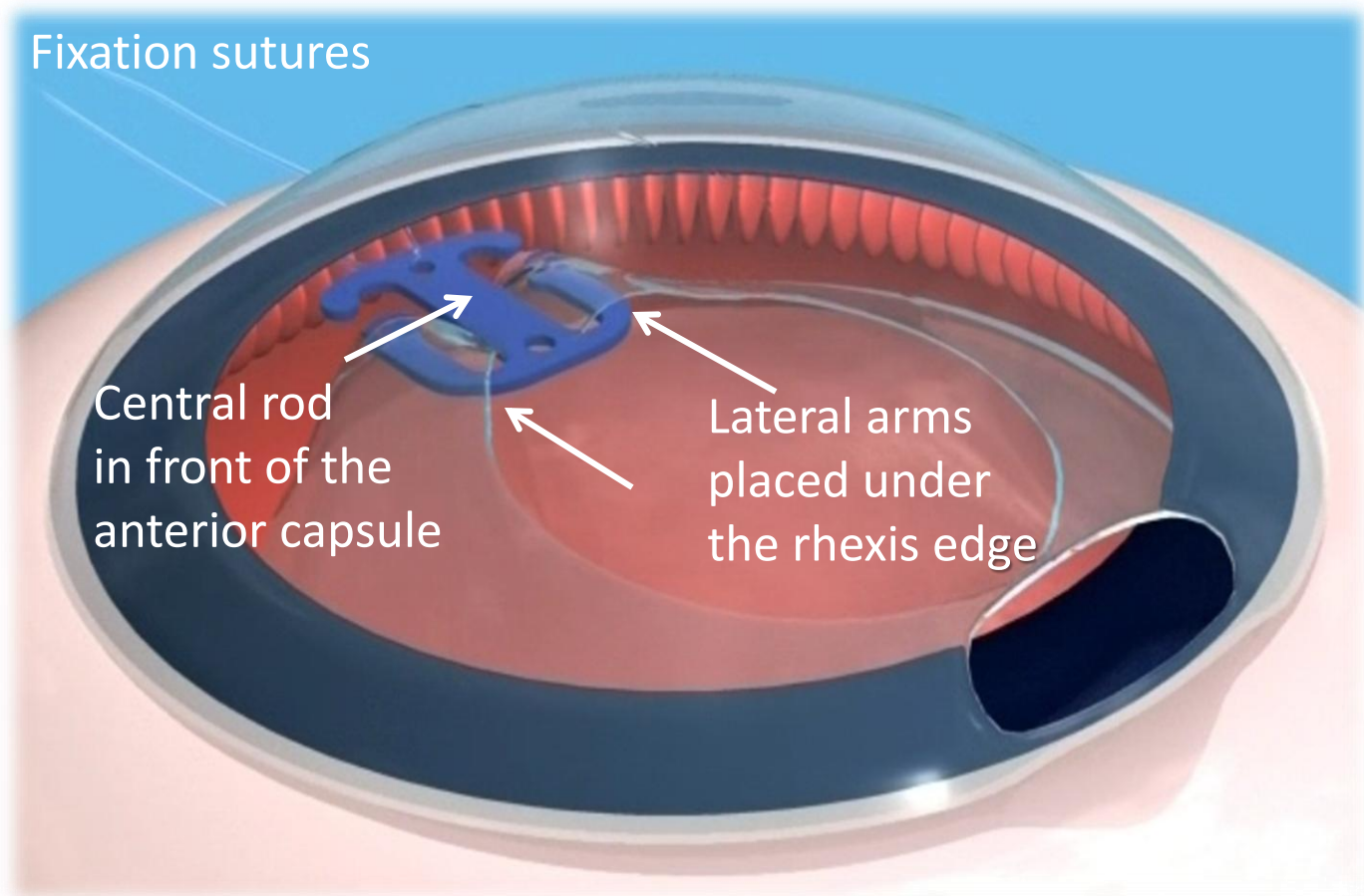
Department of Ophthalmology, Meir Medical Center, Kfar-Saba
And the Ein-Tal Eye Center, Tel Aviv, ISRAEL

Ehud I. Assia, MD, is a consultant to Hanita Lenses, Kibbutz Hanita, Israel

The Capsular Anchor is approved by the CE but is NOT FDA approved

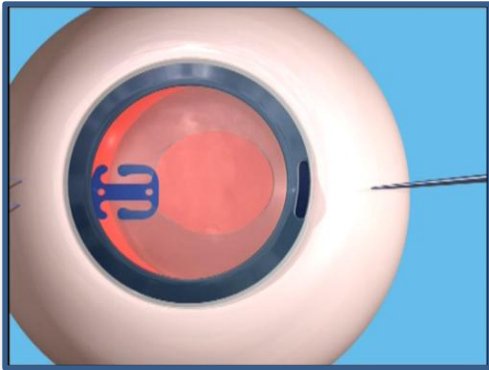
The capsular Anchor

A device for the management of subluxated lenses

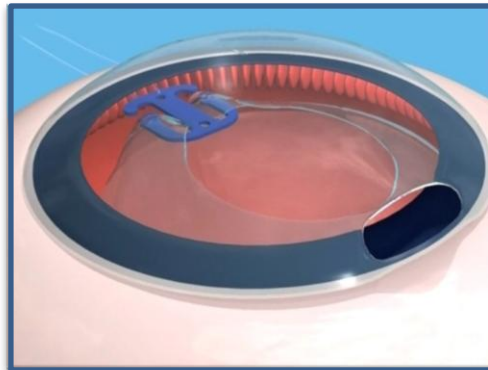


The capsular Anchor – surgical technique

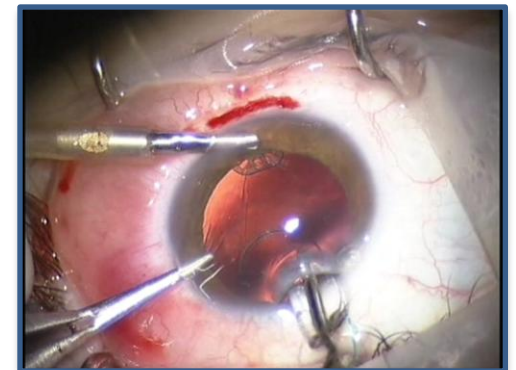
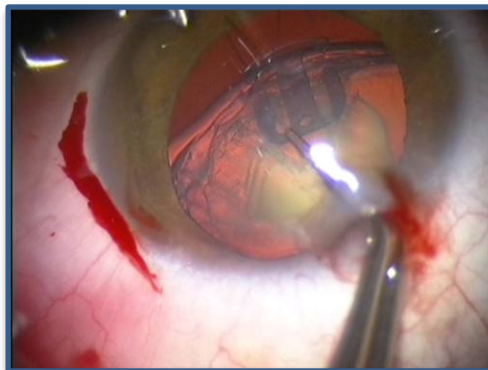
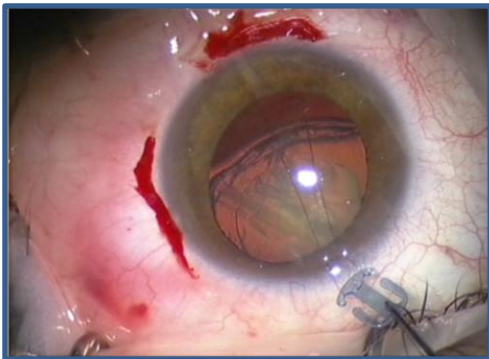
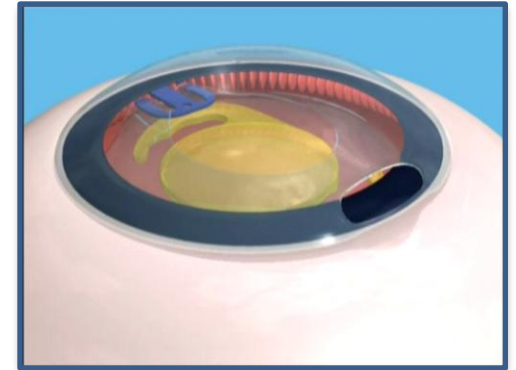
The Anchor acts as a capsular clip



The capsular Anchor is secured to the scleral wall



A PC-IOL is implanted in a stable and centered bag



Study aim

To report clinical experience with the Capsular Anchor in complicated subluxation cases.

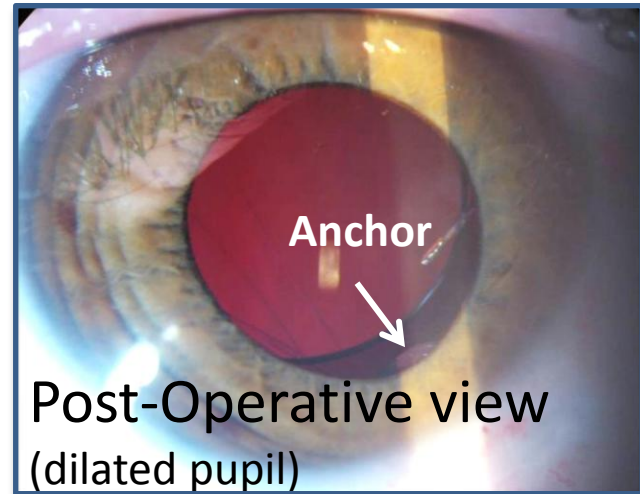
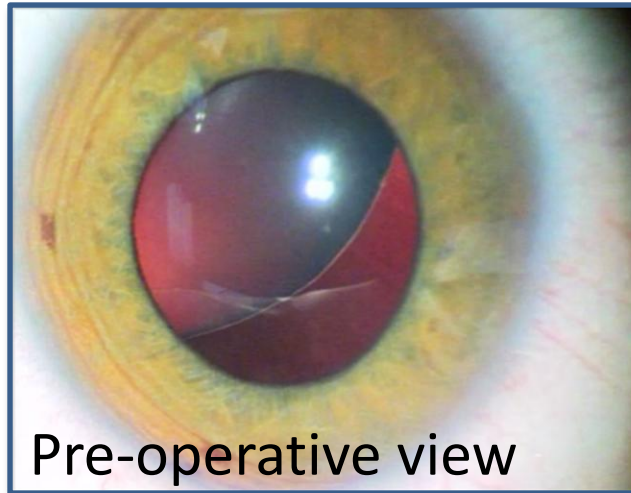
Methods

- The Anchor was used in 34 cases of subluxated lenses:
 - Marfan syndrome
 - Penetrating and blunt ocular trauma
 - Pseudoexfoliation syndrome
 - Primary ectopia lentis
 - High myopia and microsherophakia
 - Aniridia

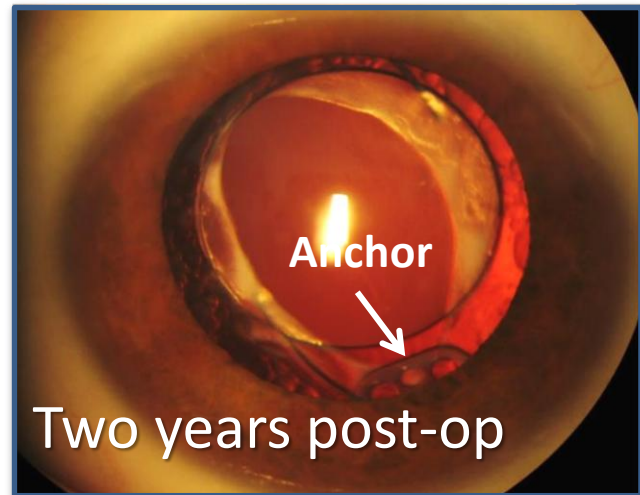
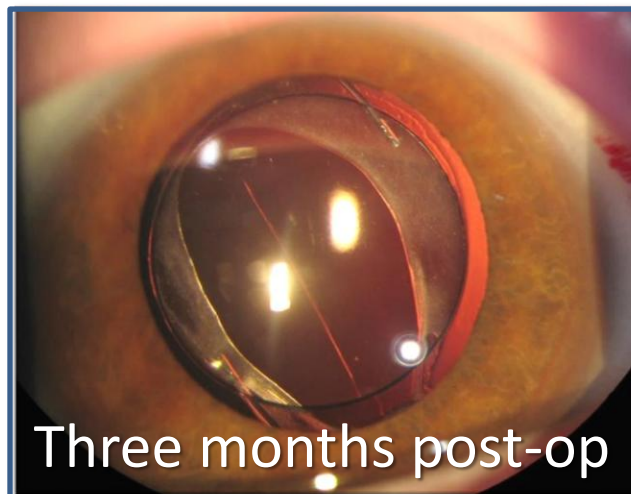
Results

Total No of cases	34 eyes
Mean age (range)	47.3 years (17-87)
Etiology	
Trauma	8
Marfan syndrome	7
Cataract and aniridia	2
Other etiologies	14
Subluxated PC-IOL	3
Visual acuity (Snellen)	
Pre-op UCVA (24 eyes)	0.29 ± 0.27
Post-op UCVA (24 eyes)	0.72 ± 0.30

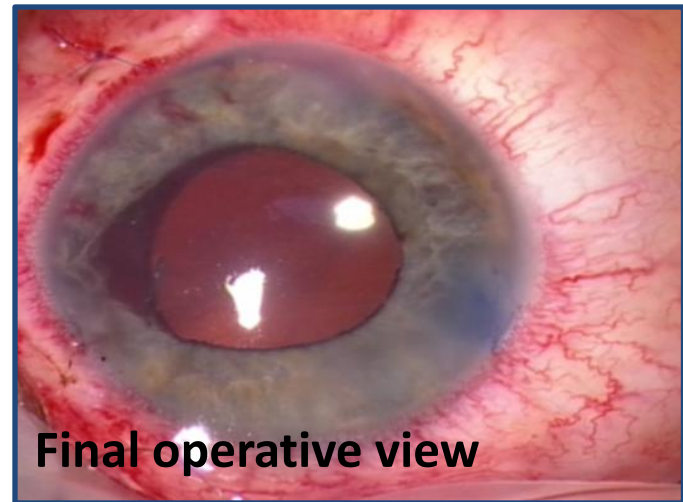
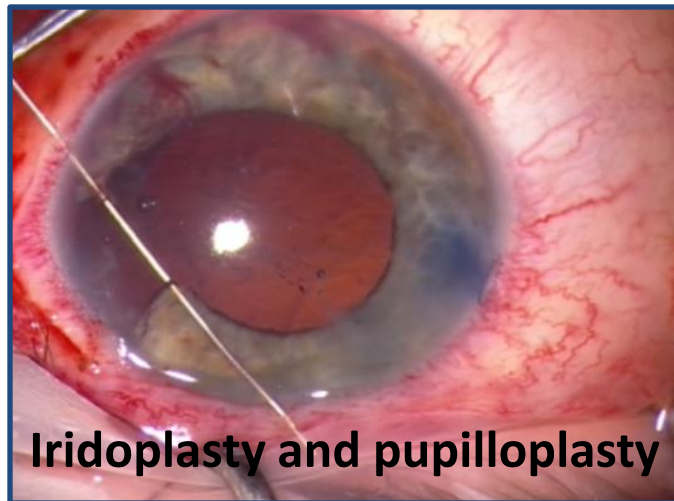
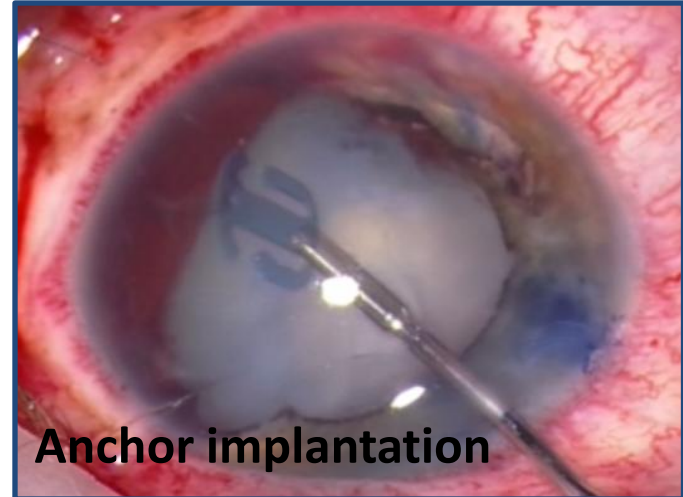
Capsular Anchor in Marfan syndrome



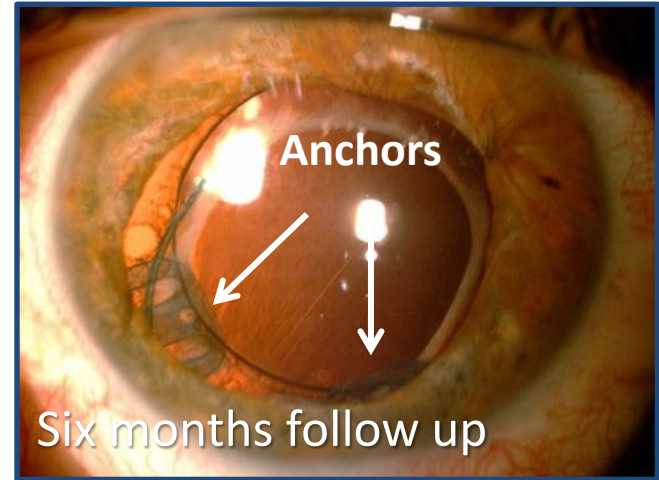
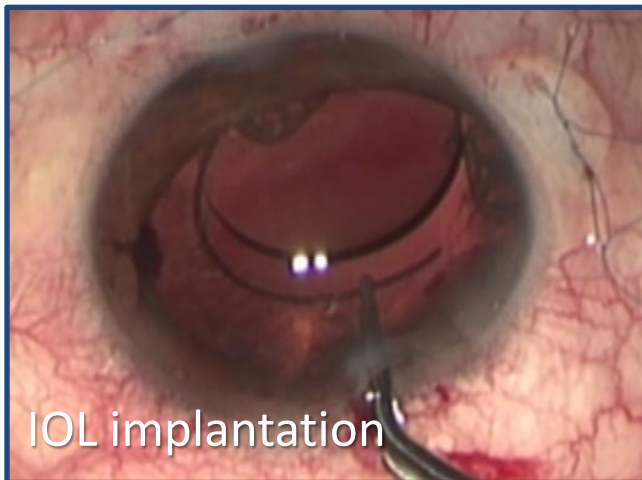
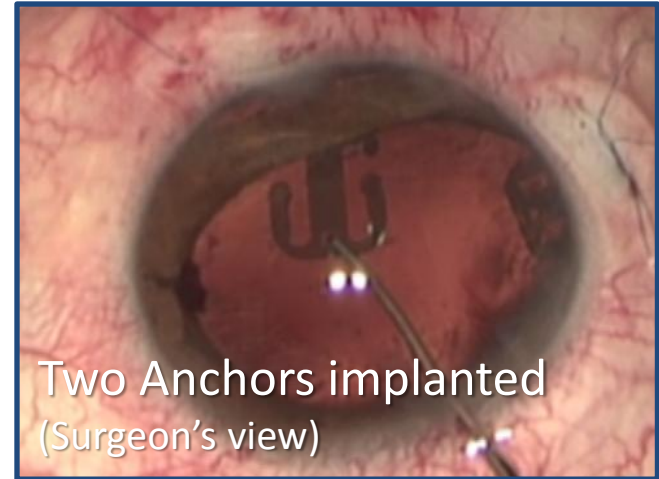
Long term follow up



Complex paintball injury



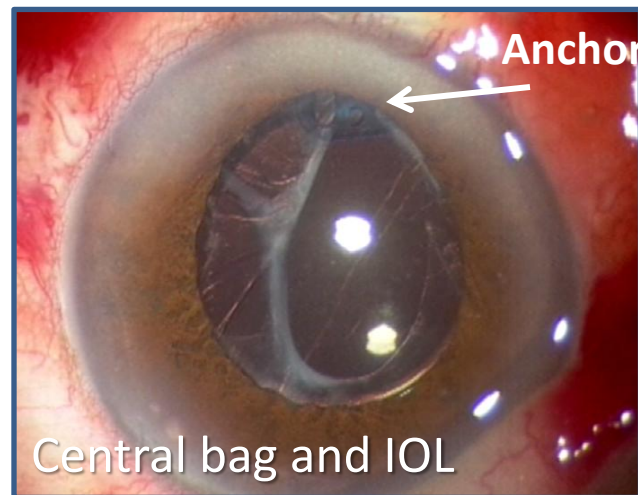
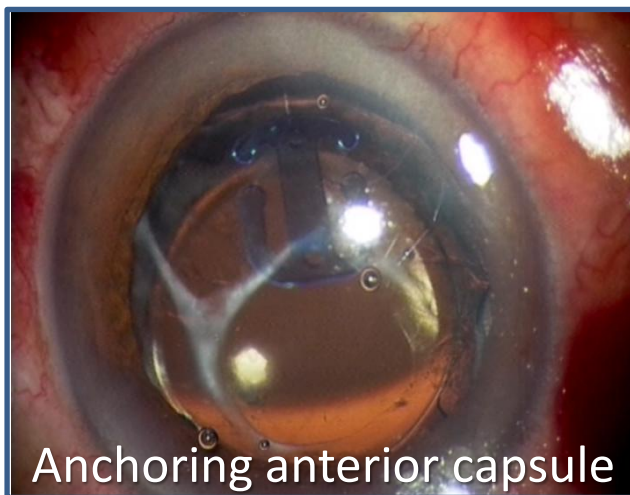
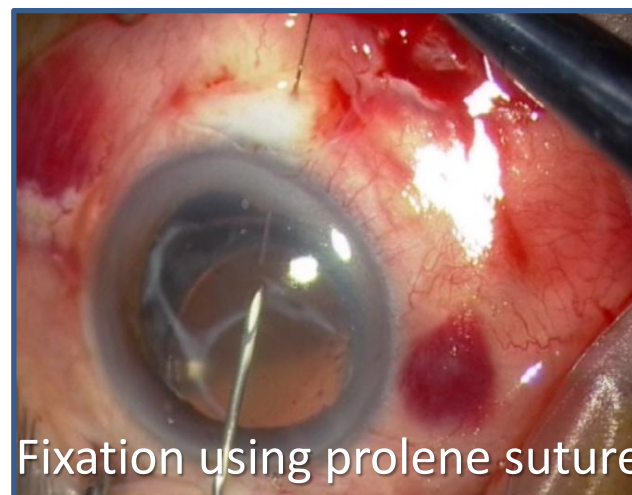
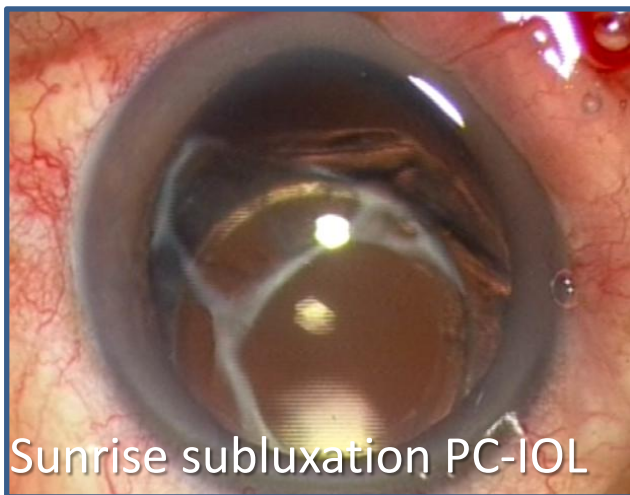
Extensive zonular injury managed with 2 Capsular Anchors



Aniridia



Subluxated intraocular lens



Video



Management of 2 cases of traumatic subluxated cataracts

Case #1- Penetrating ocular trauma

The Capsular Anchor is placed early in the procedure following capsulorhexis, facilitating lens removal and stable central IOL fixation.

Case#2 –Severe blunt ocular trauma

Despite anterior capsular tear extending to the periphery, the implanted Capsular Anchor allows bag stabilization and safe traumatic cataract removal.

Conclusions

- The Capsular Anchor is an effective device for the management of subluxated lenses.
- The Anchor may be utilized also in cases in which other capsule stabilizing devices cannot be used, such as anterior capsular tear or to reposition subluxated PC-IOLs.

