



Evaluation of Efficacy of Phaco-Trabeculotomy in Management of Cases With Coexisting Cataract and Glaucoma

Ahmad K Khalil, MD, PhD

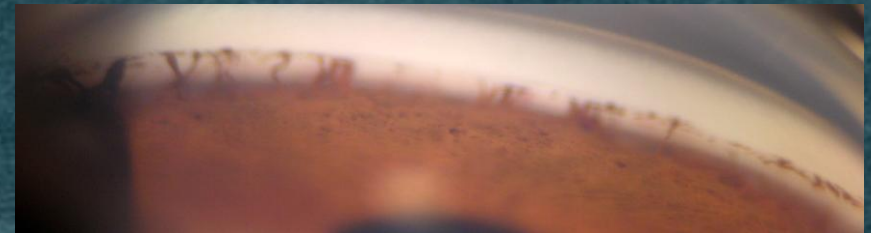
Research Institute of Ophthalmology, Cairo, Egypt

The author has no financial interest in any of the products described here

Purpose

- To evaluate the effectiveness of a combined procedure of modified trabeculotomy, phacoemulsification and intraocular lens implantation in the management of cases with coexisting cataract and late onset developmental glaucoma (LODG)

Patients



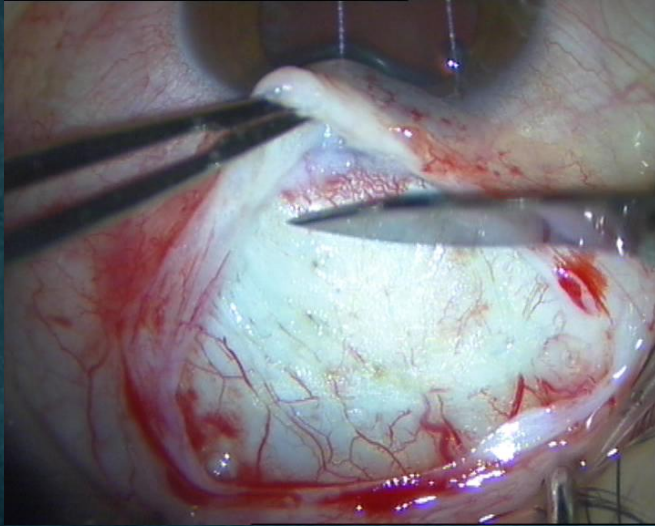
- 20 eyes (12 patients) with coexisting cataract and late-onset developmental glaucoma (Adult onset glaucoma associated with gonio-(trabeculo-dysgenesis).



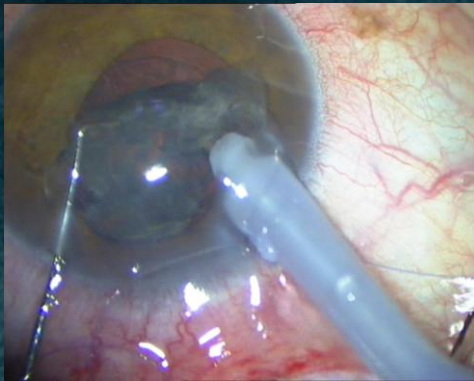
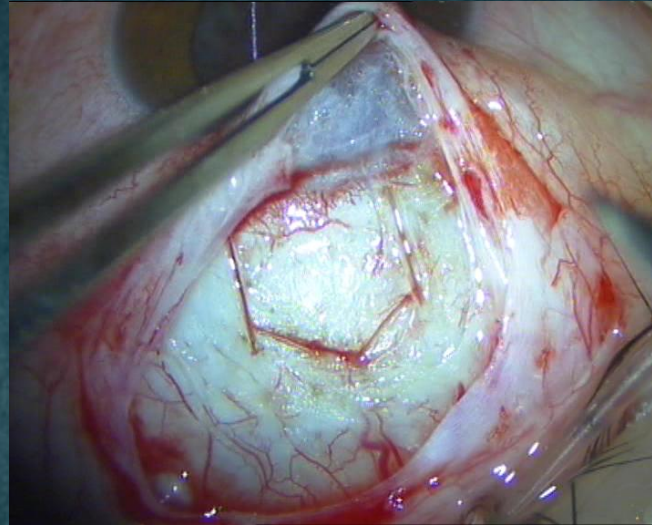
Methods

- A combined procedure of phacoemulsification, intraocular lens implantation and modified trabeculotomy was performed by 1 surgeon.
- Glaucoma surgery site was at 12 o'clock. 2 Phaco incisions were placed at 2 and 11 o'clock positions. Follow-up visits were made at 1 day, weeks 1, 2, month 1, 2, then bi-monthly till 18.

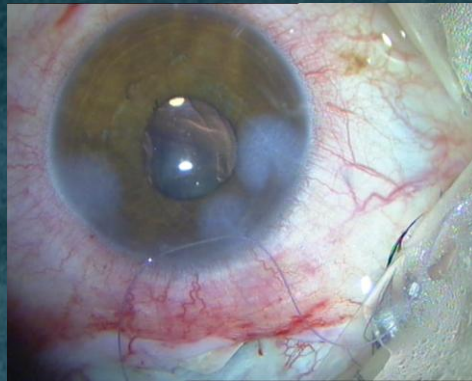
**Limbal based conjunctival
incision**



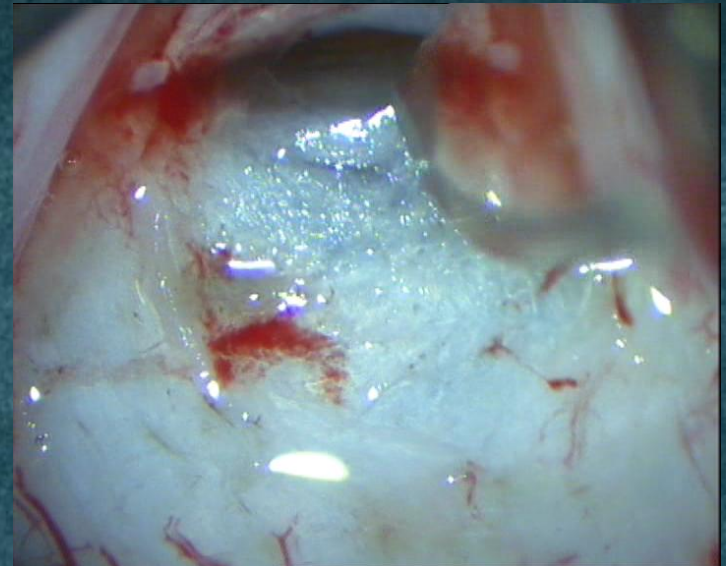
Scleral flap fashioning



Phacoemulsification

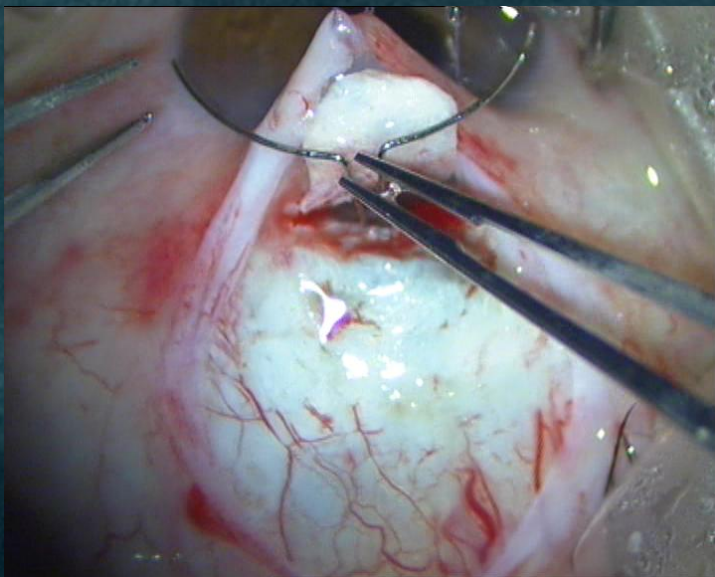


Wound hydration

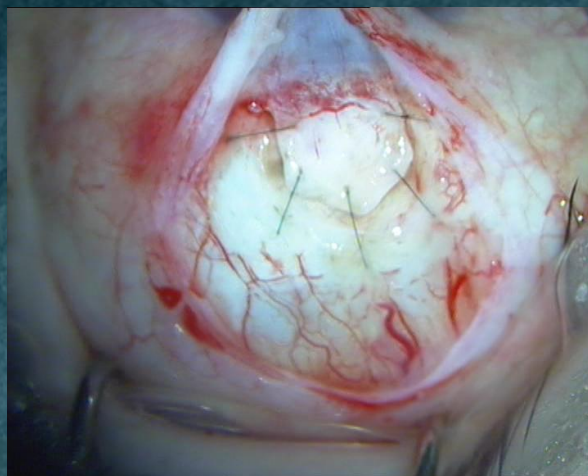
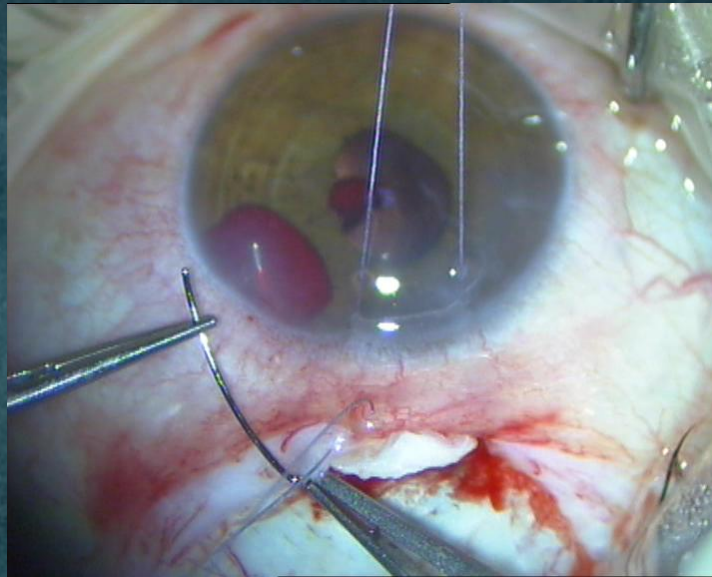


**Radially incising Schlemm's Canal
RIO**

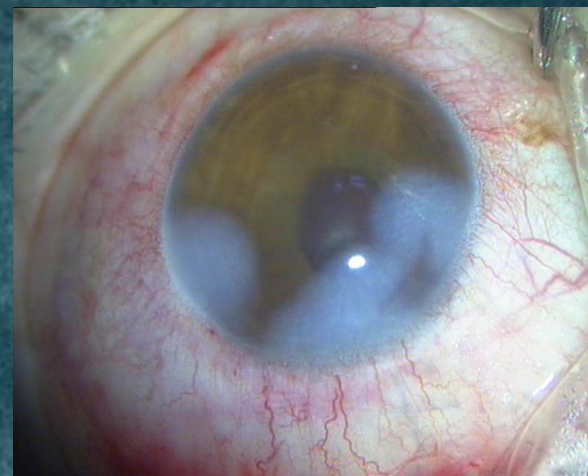
Simultaneous insertion of modified trabeculotomy probes



Rotation of probes often associated with hyphema, lovely hyphema, confirming proper positioning of probes!



flap closure



Wound re-hydration



Results

- All eyes showed significant IOP lowering at day 1 (12.2mmHg (SD 5.4)).
- Peri-operative complications included:
 - hyphema in 14 eyes (70%), which resolved within 1 week, and IOP spikes to
 - 21mmHg or more, at weeks 1, 2 in 8 eyes (40%).
- By month 18, 17 eyes had complete success, (IOP < 21 mmHg without medications), 3 eyes had IOP < 21 mmHg with medications.
- At 18 months postsurgery, the mean number of medications had fallen from 2.45 (SD 1.2) to 0.25 (SD 0.3) ($p < 0.001$).
- Visual acuity improved by a mean value of 1.8 lines (SD 2.0) over baseline ($p = 0.016$).

Conclusion



Modified phaco-trabeculotomy is an effective option with minimal complications for managing eyes of co-existing cataract and late onset developmental glaucoma