

INFLUENCES ON ENHANCEMENT RATES IN LASER VISION CORRECTION

Karl Stonecipher, MD

**Clinical Associate Professor of
Ophthalmology, UNC**

Medical Director, TLC Greensboro

Medical Director, Laser Defined Vision

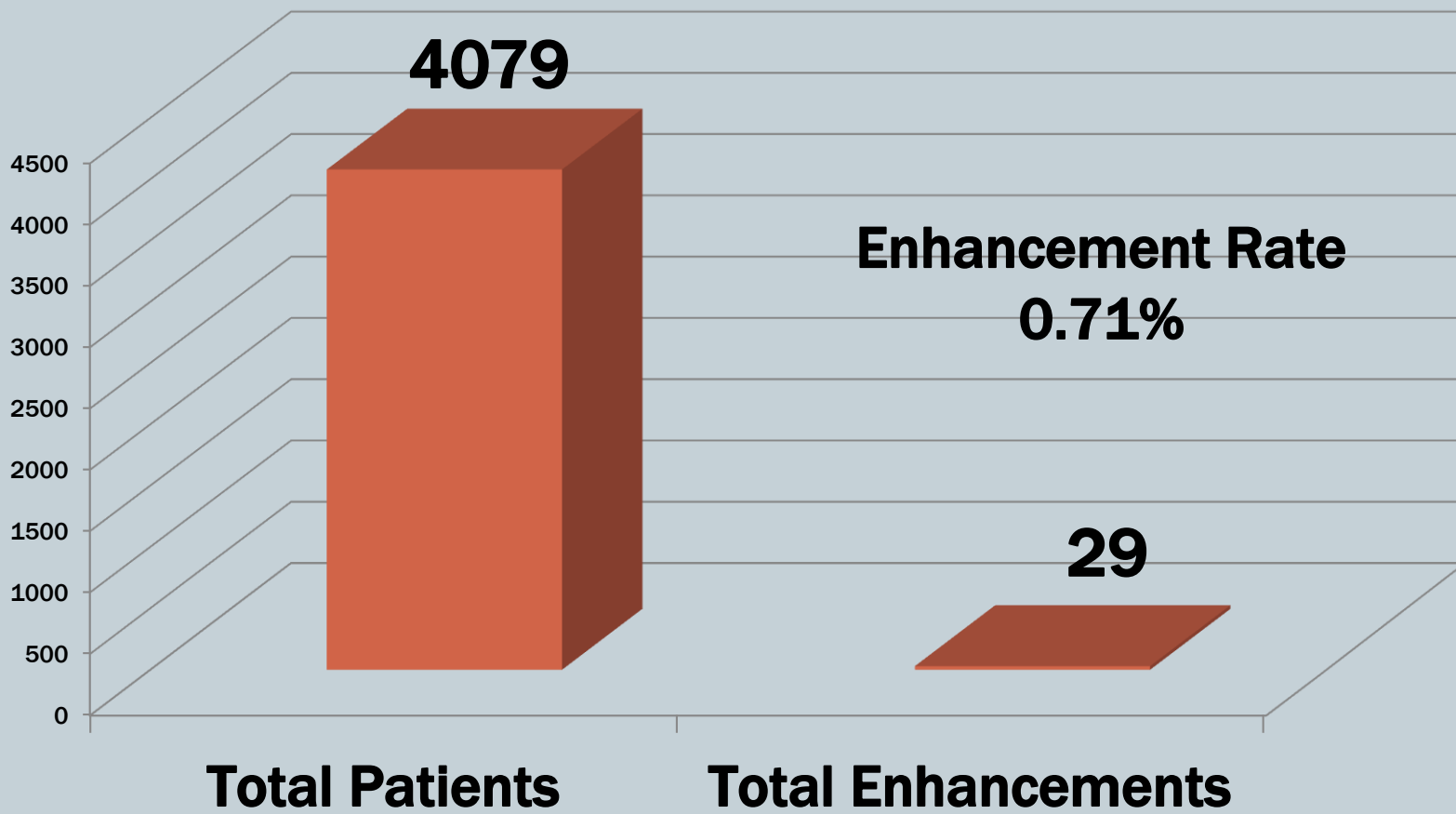
FINANCIAL INTEREST DISCLOSURE

- **Consultant/Grants/Travel/Speaker**
 - Alcon
 - Allergan
 - Nidek
 - Refocus Group
- **Consultant/Travel/Speaker**
 - B+L
- **Consultant/MAB**
 - LaserACE
 - LenSx
 - Nexus

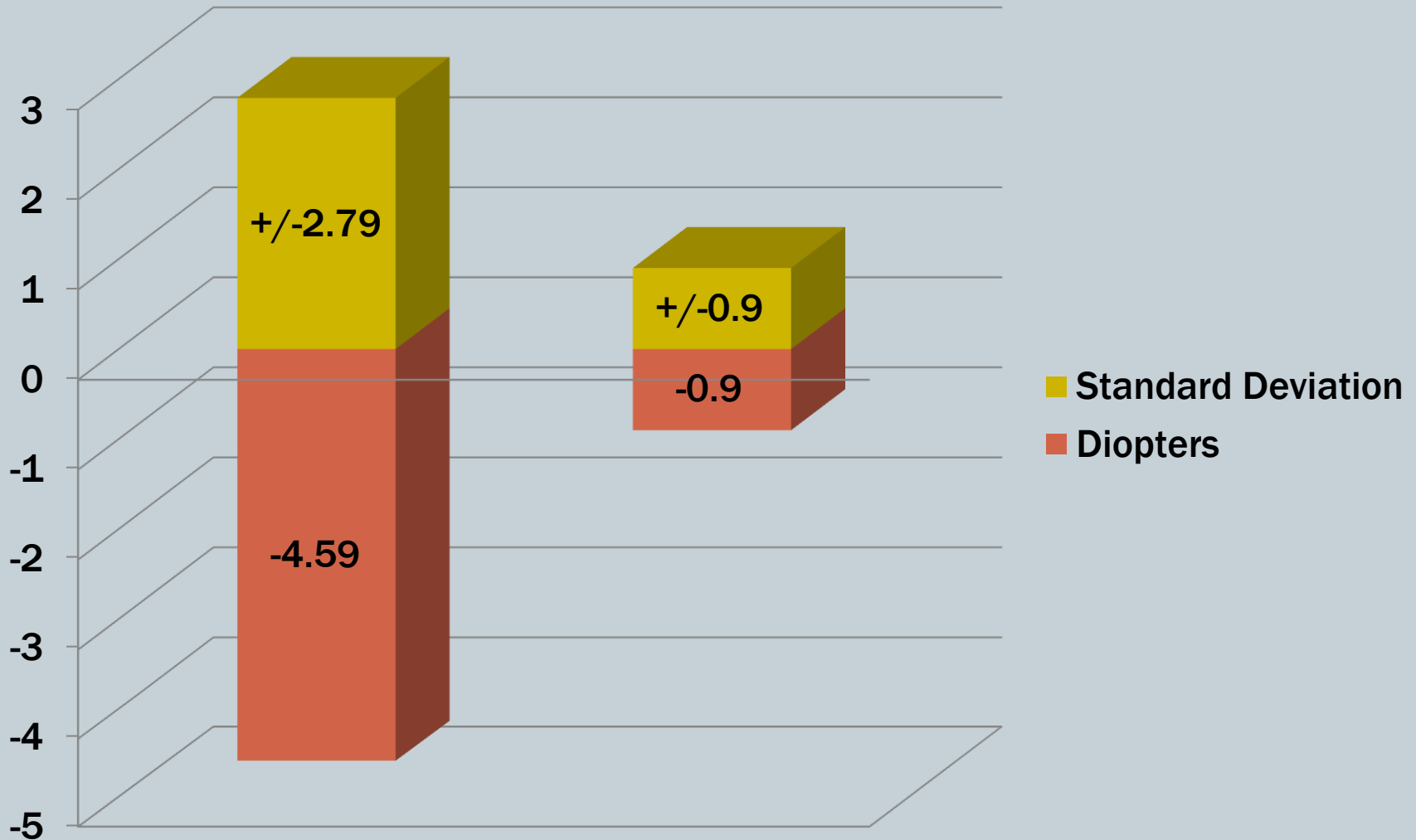
TREATMENT GROUP

SPHERE UP TO -12 D

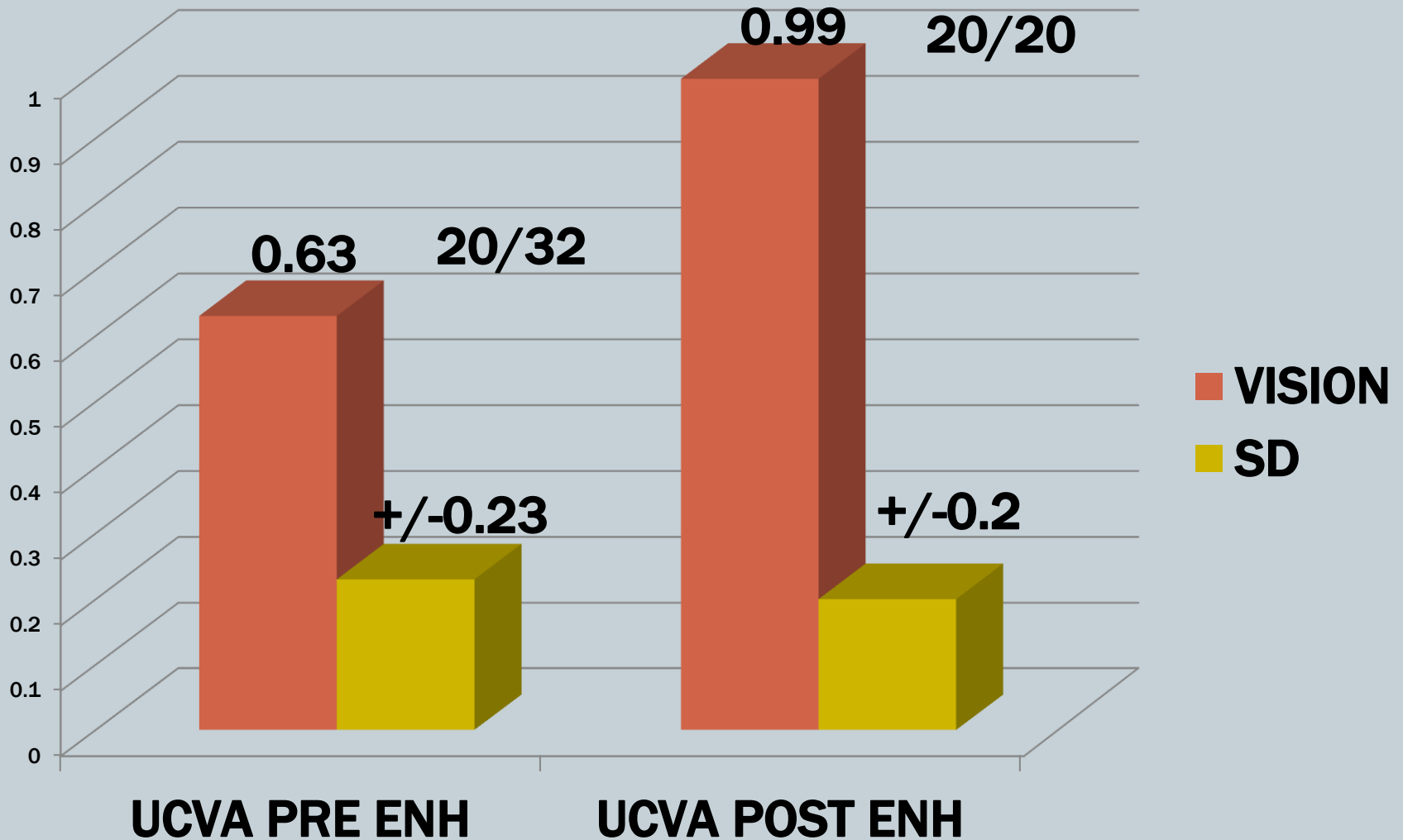
CYLINDER UP TO 4 D



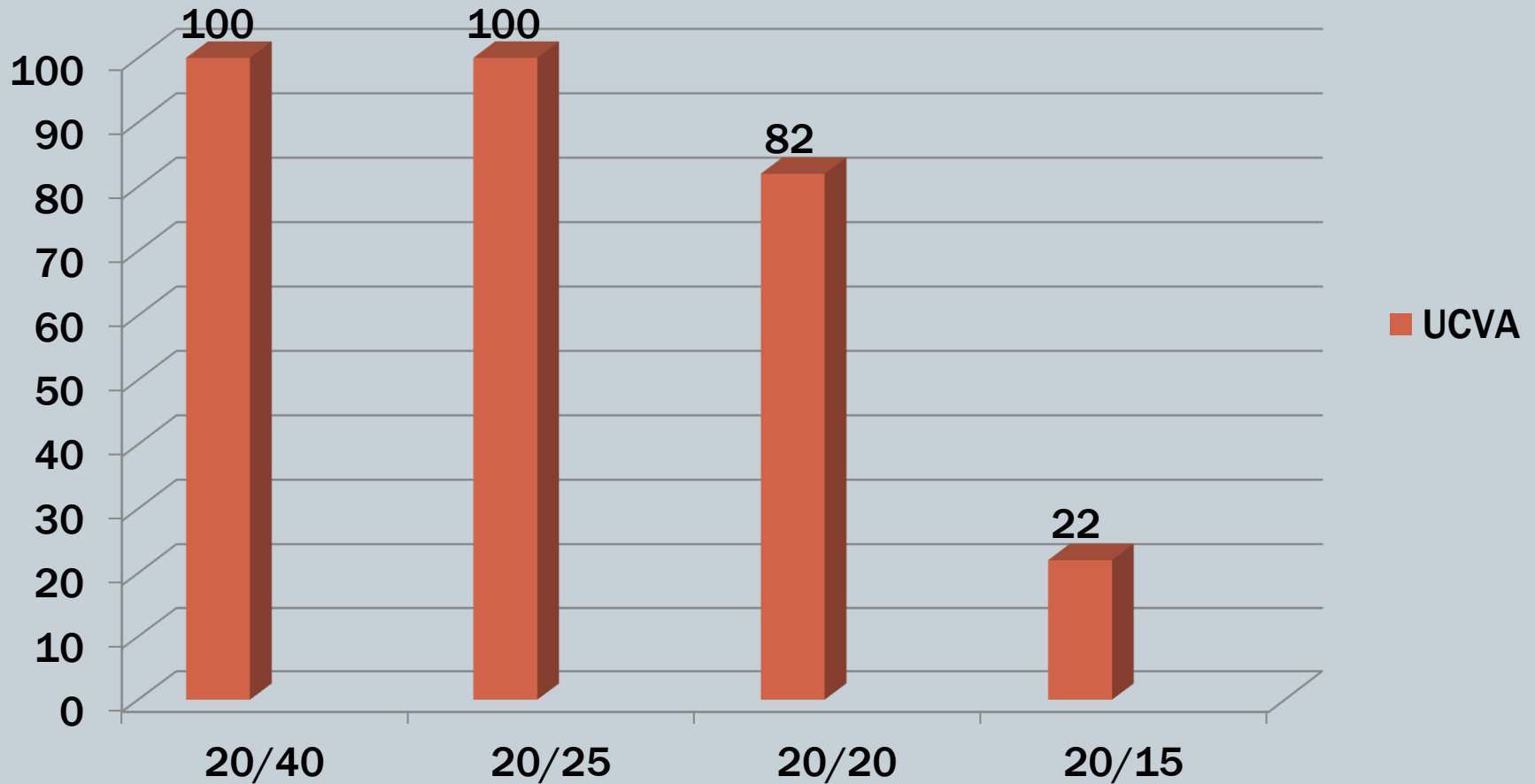
PREOPERATIVE AVERAGE TREATMENT



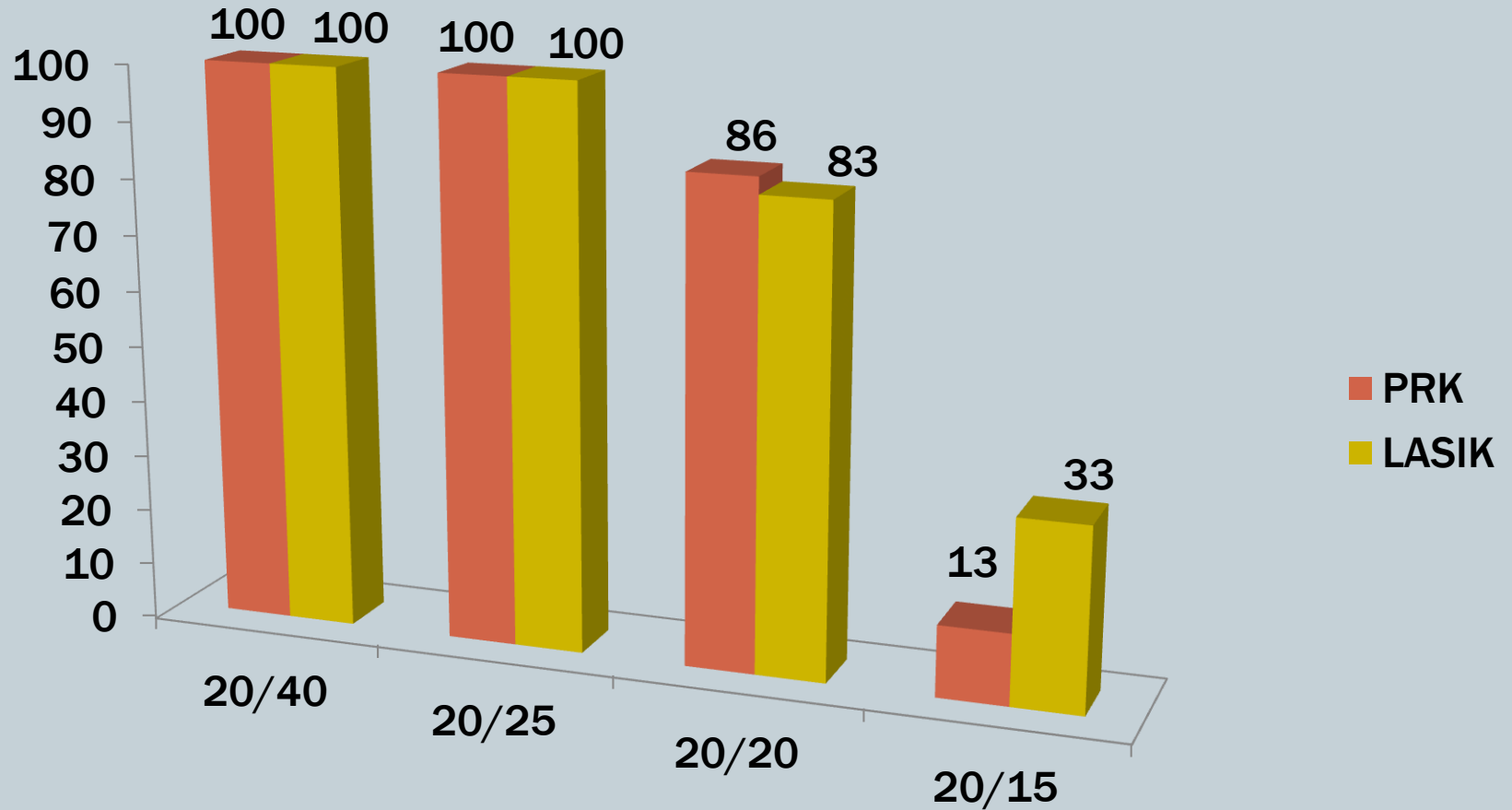
UCVA PRE ENHANCEMENT VS. POST ENHANCEMENT



UCVA POST ENHANCEMENT (N-29)

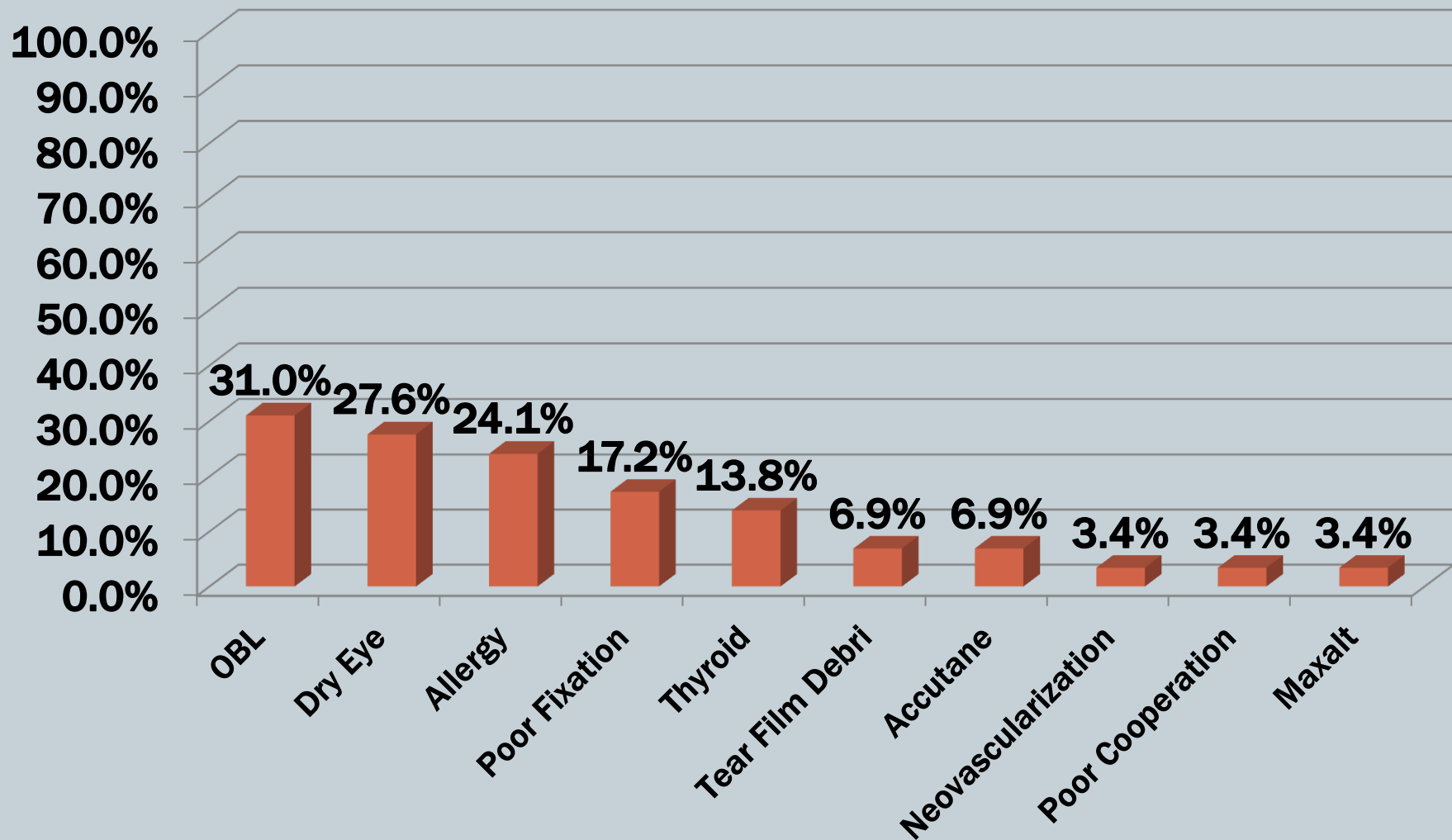


BREAKDOWN PRK V LASIK ENHANCEMENT



MAJOR AND MINOR INFLUENCES ON PATIENTS RECEIVING ENHANCEMENTS

SOME PATIENTS HAD MULTIPLE INFLUENCES



OBSERVATIONS

■ OBL

- OBL DOES INFLUENCE INCOMING PULSES

■ DRY EYE

- ACCUTANE, THYROID DISEASE, AND TEAR FILM DEBRI COULD ALL BE ASSOCIATED OR INFLUENCING DRY EYE DISEASE AND IN SOME PATIENTS MULTIPLE FINDINGS OCCURRED

■ ALLERGY

- REMEMBER GREENSBORO IS IN THE TOP 20 US CITIES FOR ALLERGY

OBSERVATIONS

- POOR FIXATION AND COOPERATION ARE DEFINITELY A FACTOR BUT LESS THAN OTHER INFLUENCES
- NEOVASCULARIZATION COULD MEAN PART OF THE TREATMENT WAS BLOCKED FROM THE BLEEDING DESPITE ME WIPING IT AWAY
- MAXALT IS ONE OF THE 5 HT DRUGS TO TREAT MIGRAINES.

CONCLUSIONS

- **THE TOP FOUR INFLUENCES WERE:**
 - 1. OBL-31%
 - 2. DRY EYE-28%
 - 3. ALLERGY-24%
 - 4. POOR FIXATION-17%
- **RANGE OF TREATMENT**
 - SPHERICAL EQUIVALENT +0.75 TO -12.1 D
 - CYLINDER 0 TO 4 D
- **POST ENHANCEMENT PATIENTS DID WELL WITH 100% SEEING 20/25 UCVA OR BETTER**
- **ENHANCEMENT RATE FOR THE GROUP WAS 0.71%**
- **LASIK ENHANCEMENTS HAD BETTER OUTCOMES THAN PRK ENHANCEMENTS AT THE 20/15 BUT IN SOME CASES YOU MAY NOT HAVE AN OPTION**