



# ***Radiofrequency Blade For Removal and 5-FU Drops Postoperatively Used for Extended Conjunctival Malpighian Papilloma Management***

**Chryssa Terzidou, George Dalianis, Paraskevi Drakou**

**Ophthalmological Clinic  
Konstantopoulou –Patission Gen Hptl, Athens Greece**



**Financial disclosure:**

Authors have no financial interest related to this presentation

# Case presentation

**We describe the successful management of an extended limbal tumor in a 75 year old man which histologically was described as malpighian conjunctival papilloma**

**The tumor was located at the LE temporal conjunctiva and covered part of the cornea. Feeding vessels were present**

- ❑ After **local** anesthesia
- ❑ the tumor was carefully excised using **radiofrequency** with thin sharp blade
- ❑ RF knife was also used to create conjunctival **flaps** in order to cover the big defect that was left.
- ❑ **Alcohol** was used to remove the epithelial remnants off the cornea

- ❑ **Advantages** of the RF use were hemostasis, precise tissue cuts and minor tissue distortion.

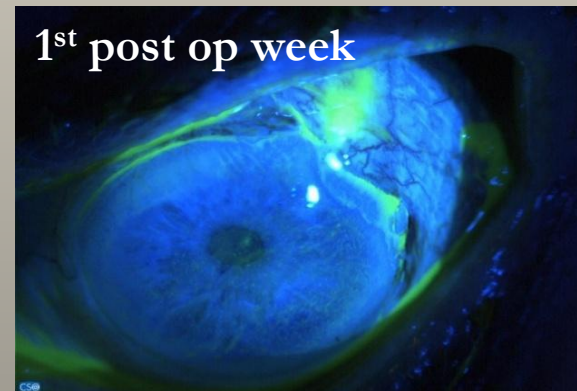
**RF blade For conj.  
tumor removal  
surgical steps**

video

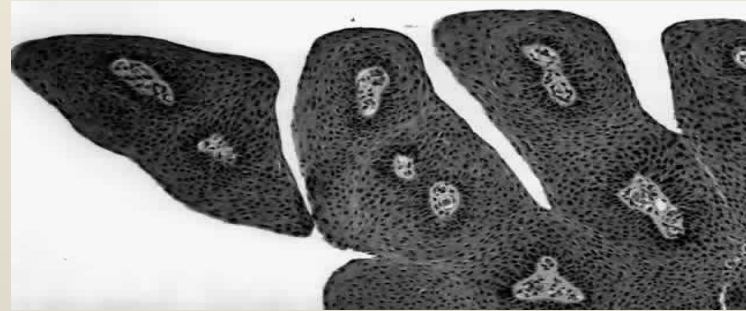
## Postoperative management - Results

- ❑ A silicone-hydrogel **contact lens** was placed at the end of the surgery
- ❑ Mixed steroid –chloramphenicol **drops** 4 times a day for a week
- ❑ After the first week, 3 cycles of 5% 5-FU drops were used
- ❑ (each cycle represents: 5% **5-FU drops** 4 times a day for 7 days followed by 1 week off drops).
- ❑ During this whole period additionally **autologous serum** drops 4 times a day was administered in order to prevent possible 5-FU drops toxic effect to the cornea.

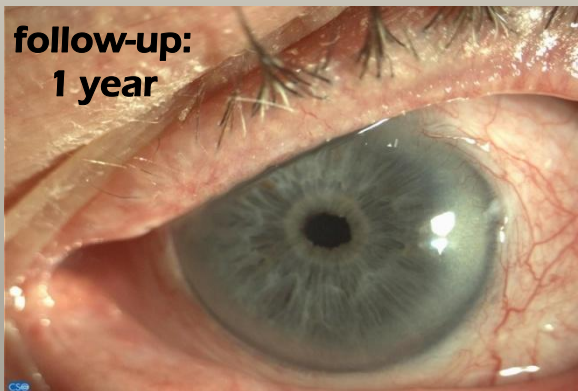
**Results:** Healing during postoperative period was normal. During the 1 year of follow-up no recurrence of the tumor or other complications from the 5-FU drops were noticed



□ **Histology results :**  
**malpighian papilloma**  
**of conjunctiva**

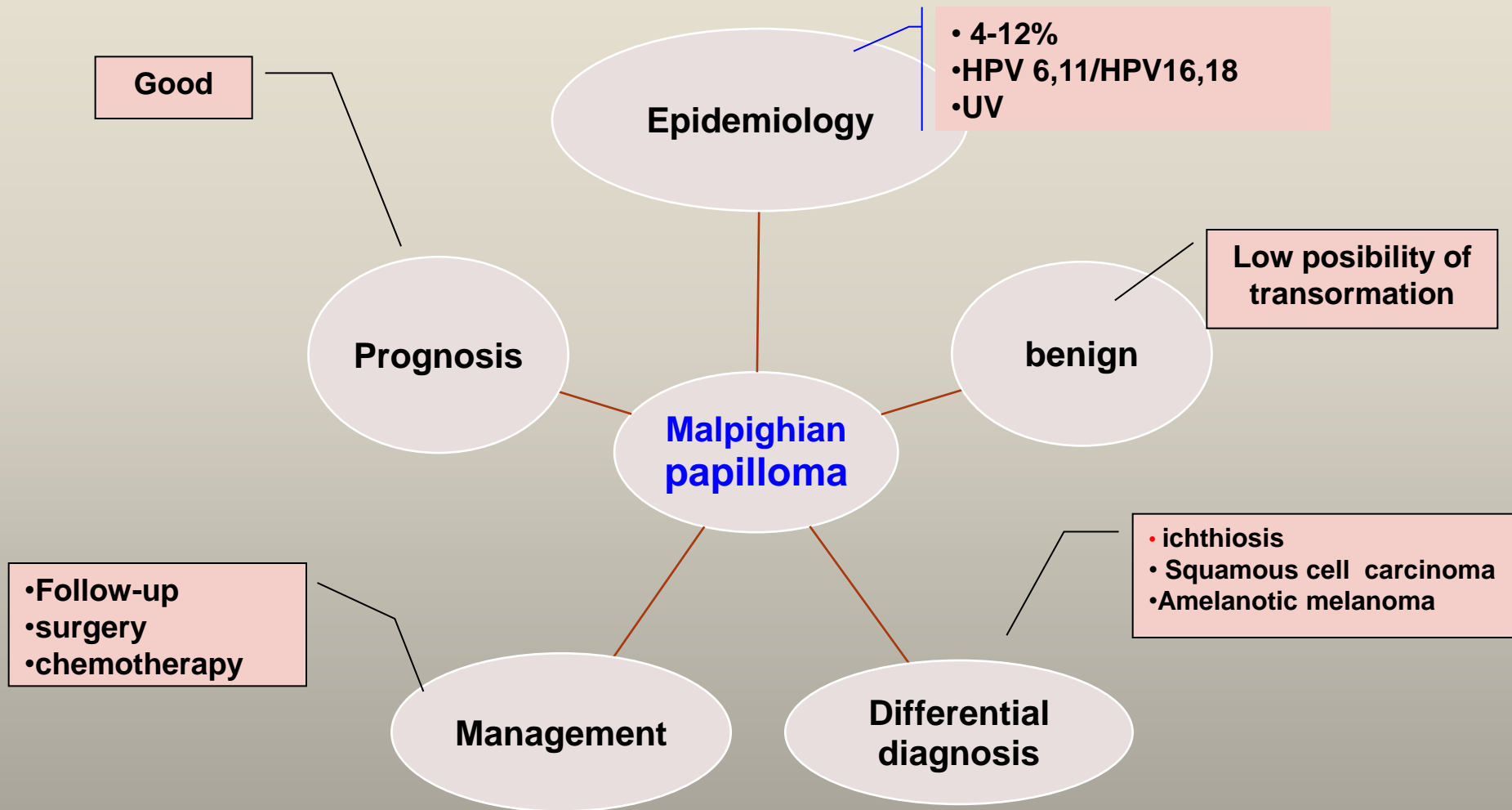


**Histological image of a malpighian papilloma**  
(Periocular Involvement of Papillomavirus DAVID S. BARDENSTEIN and JONATHAN H. LASS)



**During the 1 year of follow-up no recurrence of the tumor or other complications from the 5-FU drops or surgery were noticed**

# The malpighian papilloma



## Conclusion:

❖ The use of **RF thin blade** for conjunctival surgery allows precise incisions with hemostasis leading to less traumatic, faster and more accurate surgery.

•

❖ In such cases **chemotherapeutic** agent should be used as adjunctive management short after surgery specially if tumor's characteristics are suspicious for malignancy or recurrences.

